

FIG.: 01

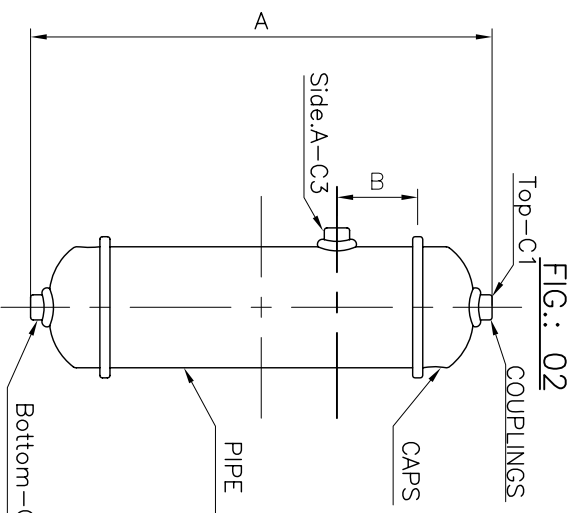


FIG.: 02

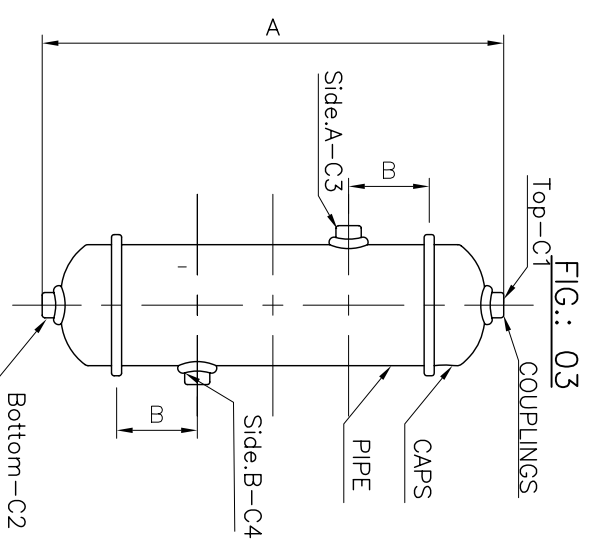


FIG.: 03

NOTES:

- * WELD JOINTS WILL BE WELDED AS PER ASME SEC IX.
- * EXTERIOR FINISH – FOR SS ELECTROPOLISHED FINISH & FOR CS, AS ZINGA COATED, HIGH TEMP. SILVER PAINTED, RED OXIDE PAINTED...
- * ABOVE FIGURE CAN BE OFFERED IN ANY DIMENSIONS MENTIONED OR FABRICATED AS PER YOUR REQUIREMENT.
- * ALL CONNECTIONS ARE 1/2"(15) SIZE & CAN EITHER BE THREADED OR PROVIDED WITH SOCKET WELD ENDS.
- * THREADED CONNECTION (NPT) : AS PER ANSI B 2.1
- * THREADED CONNECTION (BSP) : AS PER BS 2779
- * SOCKET WELDING ENDS : AS PER ANSI B 16.11

SIZE (NB)	SCHEDULE	DIMENSION						CUSTOMER REQUIREMENT	
		1		2		3		A	B
3"	40	A	B	A	B	A	B	A	B
	265	38	356	51	356	57			
	80	38	356	51	356	57			
4"	160	42	356	51	356	57			
	40	45	356	51	356	57			
	300	45	356	51	356	57			
6"	80		356	25	432	57			
	160		356	25	432	57			
	160		356	25	432	57			

MATERIAL	SHELL	CAPS
C.S.	A-106	A-105
S.S.304	A-312 TP-304	A 403 Gr.304
S.S.316	A-312 TP-316	A 403 Gr.304
A.S.	A-335 Gr.-22/11	A-182 F22/F11

TEST PRESSURE (Kg/cm²)

SIZE	SCH-40	SCH-80	SCH-160
3"	95	155	275
4"	90	150	260
6"	80	125	210

*NOTE : ALL DIMENSIONS IN MM ARE FOR REFERENCE ONLY AND ARE SUBJECT TO CHANGE WITHOUT PRIOR INTIMATION.

BAXCELL Instrument Valves & Fittings Pvt. Ltd.

(An ISO 9001:2008 CERTIFIED)



TITLE: SEAL CHAMBERS / CONDENSATE (POTS)

SCALE : NTS. DATE: 01.04.2013

DRAWN BY CHECKED BY APPD. BY

DRG. NO. BAX-CP-01

REV. RO